

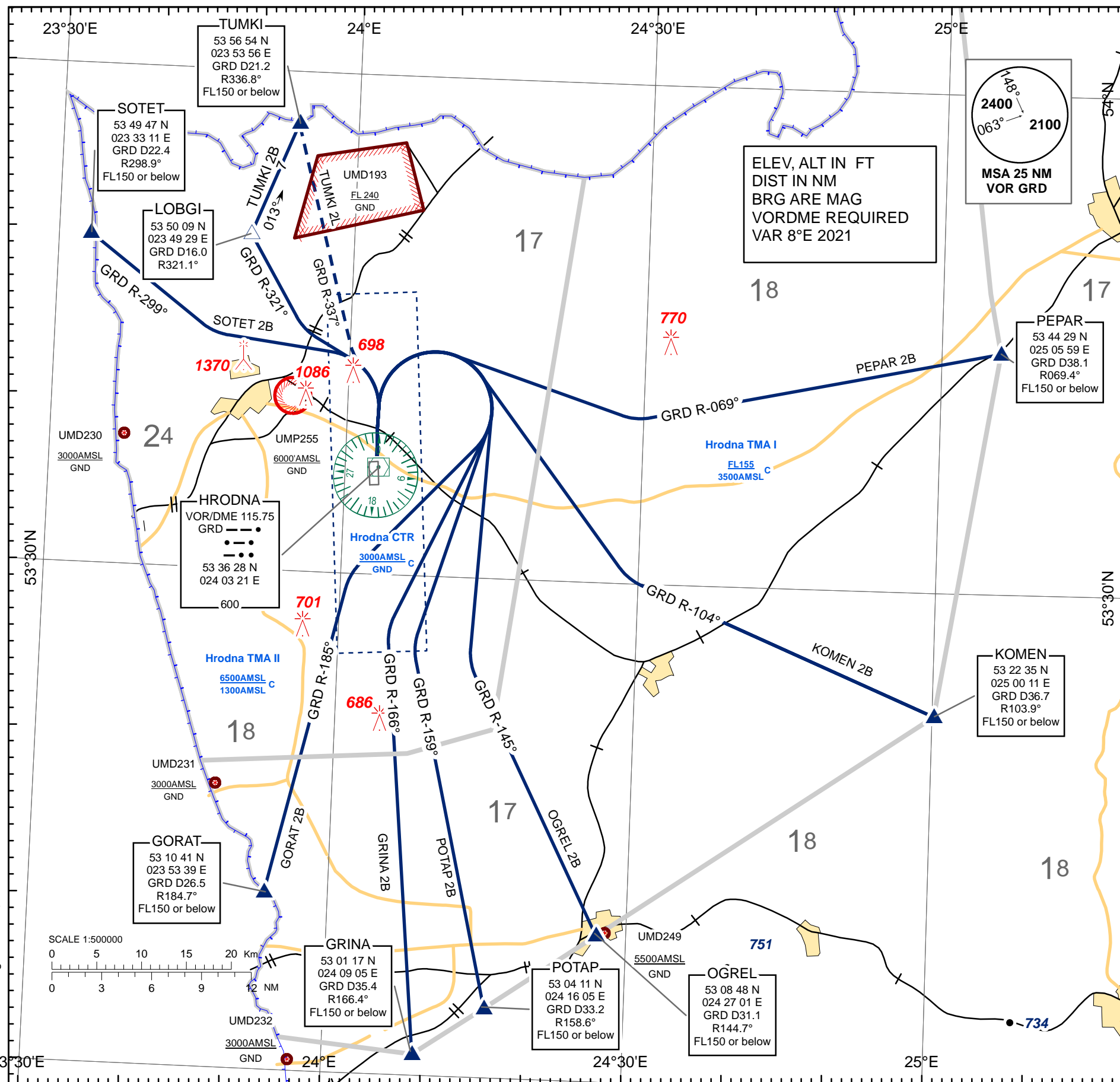
STANDARD DEPARTURE CHART  
INSTRUMENT (SID) - ICAO

TRANSITION ALTITUDE  
6000

Alt set: - hPa (mm on req)  
- QNH (QFE on req)

TWR 134.500  
MET 135.025 (EN)  
126.175 (RUS)

**HRODNA  
RWY 35**  
GORAT 2B, GRINA 2B, KOMEN 2B, OGREL 2B,  
PEPAR 2B, POTAP 2B, SOTET 2B, TUMKI 2B,  
TUMKI 2L



STANDARD INSTRUMENT DEPARTURE (SID) ROUTES HRODNA RWY 35	
SID NAME	ROUTE
<b>GRINA 2B</b>	<b>GRINA TWO BRAVO</b> Climb straight ahead to 1100 (670) or above, turn RIGHT 196° track to intercept GRD VOR R-166° and proceed to GRINA.
<b>GORAT 2B</b>	<b>GORAT TWO BRAVO</b> Climb straight ahead to 1100 (670) or above, turn RIGHT 215° track to intercept GRD VOR R-185° AND proceed to GORAT.
<b>KOMEN 2B</b>	<b>KOMEN TWO BRAVO</b> Climb straight ahead to 1100 (670) or above, turn RIGHT 134° track to intercept GRD VOR R-104° and proceed to KOMEN.
<b>OGREL 2B</b>	<b>OGREL TWO BRAVO</b> Climb straight ahead to 1100 (670) or above, turn RIGHT 175° track to intercept GRD VOR R-145° and proceed to OGREL.
<b>PEPAR 2B</b>	<b>PEPAR TWO BRAVO</b> Climb straight ahead to 1100 (670) or above, turn RIGHT 099° track to intercept GRD VOR R-069° and proceed to PEPAR.
<b>POTAP 2B</b>	<b>POTAP TWO BRAVO</b> Climb straight ahead to 1100 (670) or above, turn RIGHT 189° track to intercept GRD VOR R-159° and proceed to POTAP.
<b>SOTET 2B</b>	<b>SOTET TWO BRAVO</b> Climb straight ahead to 1100 (670) or above, turn LEFT 269° track to intercept GRD VOR R-299° and proceed to SOTET.
<b>TUMKI 2B</b>	<b>TUMKI TWO BRAVO</b> Climb straight ahead to 1100 (670) or above, turn LEFT 291° track to intercept GRD VOR R-321° to LOBGI, turn RIGHT track 013° and proceed to TUMKI.
<b>TUMKI 2L</b>	<b>TUMKI TWO LIMA</b> Climb straight ahead to 1100 (670) or above, turn LEFT to intercept GRD VOR R-337° and proceed to TUMKI.

CHANGE: Magnetic VAR: DLTD ELDOK1B.

THIS PAGE INTENTIONALLY LEFT BLANK